

# controllers

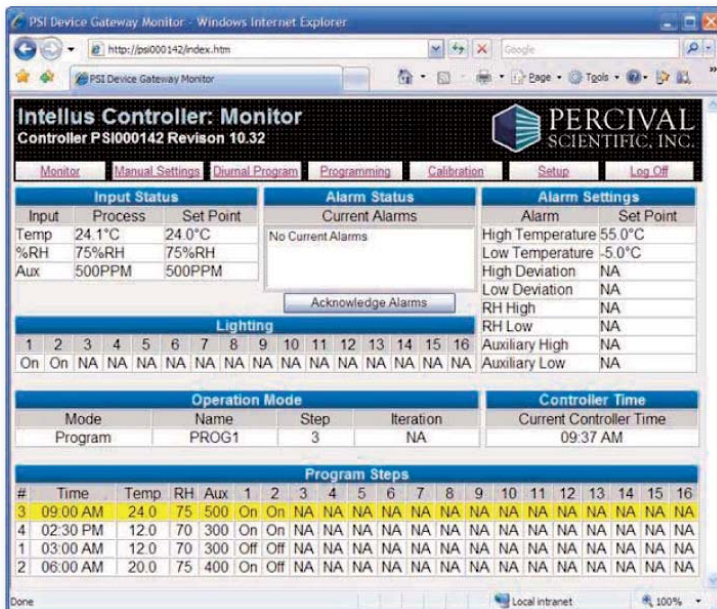
## intellus web server

the intellus web server allows the end-user to:

- View current set points and process values, alarm status, alarm settings, program operation mode, program steps and controller time
- Configure and run diurnal program or multi-step programs
- Sequence multi-step programs
- Modify and run manual settings
- Modify alarm settings
- Modify calibration offsets
- View and reset light lifetime for lamp maintenance (if applicable)
- Configure defrost settings (if applicable)
- Configure email addresses for alarm and current chamber status notifications
- Configure security logins/passwords

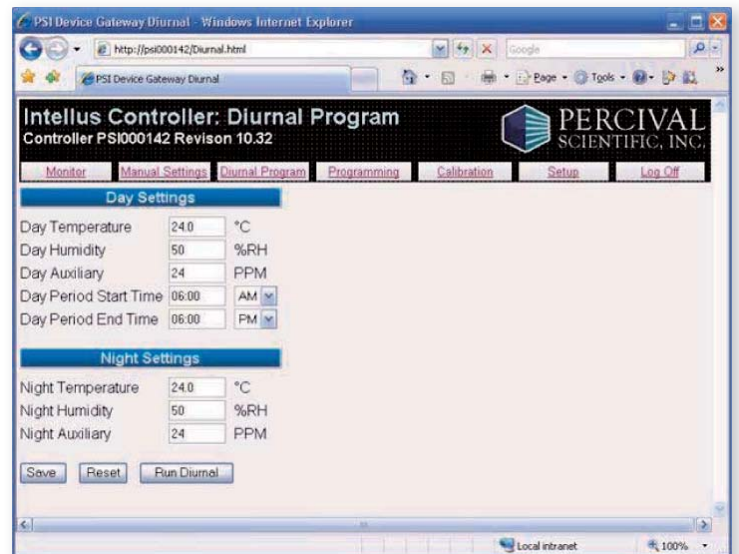


Control any Percival chamber remotely using the Intellus Web Server and a Windows based PC or Windows Mobile 5.0 Treo™ 700 WX smart phone manufactured by Palm®. The Intellus Web Server is accessed using Internet Explorer 6.0 or greater (requires network or internet connection to chamber). No additional software is required.



## monitor screen

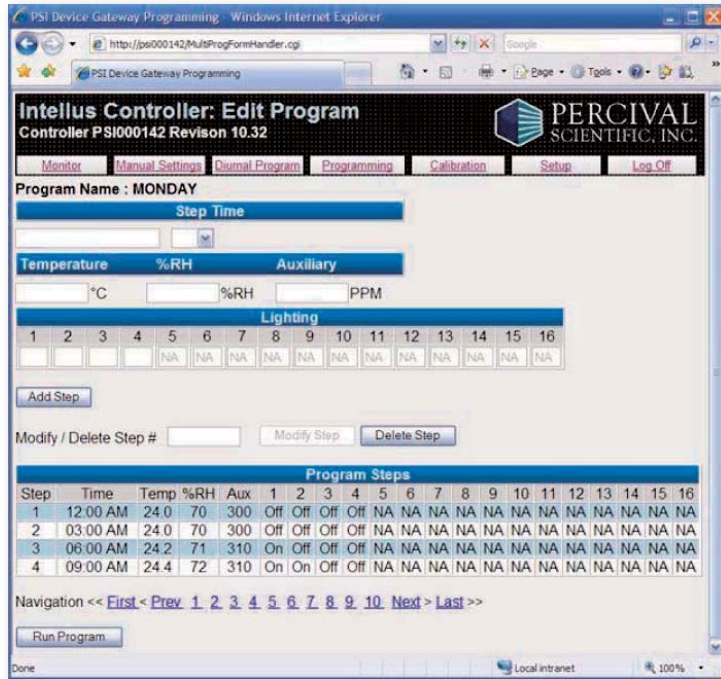
View current set points and process values, alarm status, alarm settings, program operation mode, program steps and controller time on the Monitor Screen.



## diurnal program screen

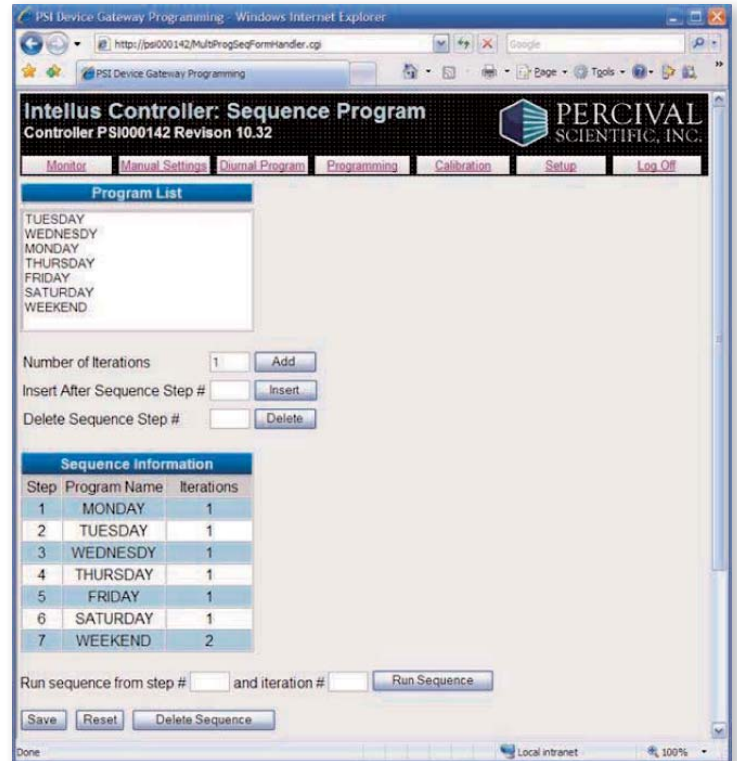
Easily edit and run day and night settings using the Diurnal Program Screen. All lights automatically turn on during the day period and turn off during the night period.

# controllers intellus web server



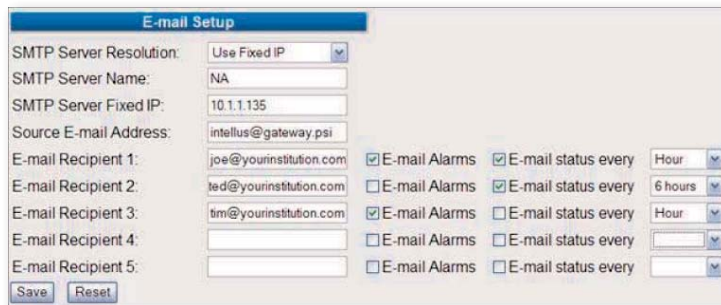
## edit program screen

Create and edit multi-step programs using the Edit Program screen. Up to a total of 560 program steps can be created. Up to a total of 70 programs can be created. Refer to Intellus Ultra specification sheet for details on how programs and program steps are divided between programming modes.



## sequence program screen

Link programs together to run different profiles over time using the Sequence Program Screen. Up to 50 programs can be linked together.



## e-mail setup

Add up to five e-mail addresses for alarm and chamber status notifications. Alarm notifications are sent immediately upon alarm activation. Status notifications can be sent hourly, every six hours, every twelve hours or once per day. Alarm notifications and status notifications can be activated or deactivated separately per e-mail address.

**ETA Associates**  
 119 Foster Street, Bldg #6  
 Peabody, MA 01960  
 Tel: (978) 532-1330  
 Fax: (978) 532-7325  
 www.ETAassociates.com  
 eta@ETAassociates.com

