

THERMO-ELECTRIC COOLERS

Classic Model 20410

Perma Pure's Baldwin™ Classic Series Model 20410 Thermo-Electric Coolers is specifically designed for high ambient temperature & high water volume applications and can be used in single stream or dual stream applications. The Model 20410 features an oversized heat sink and high performance thermoelectric devices for high heat removal capacity. Heat sinks used in the Baldwin-Series Thermo-Electric Coolers are made out of high heat transfer extruded aluminum with large 3/4" thick end plates. The Model 20410 incorporates a special controller specifically designed to run at high ambient temperatures up to 110°F (43°C).



Physical Description

Single (Series) / Dual (Parallel) Stream System
 4 x 10" Heat Exchangers connected in parallel or series (passive/active, passive/active)
 2 Passive (cooled to ambient), 2 Active (cooled to 4°C) Heat Exchangers
 LCD temperature display, water slip relay

Operating Specifications

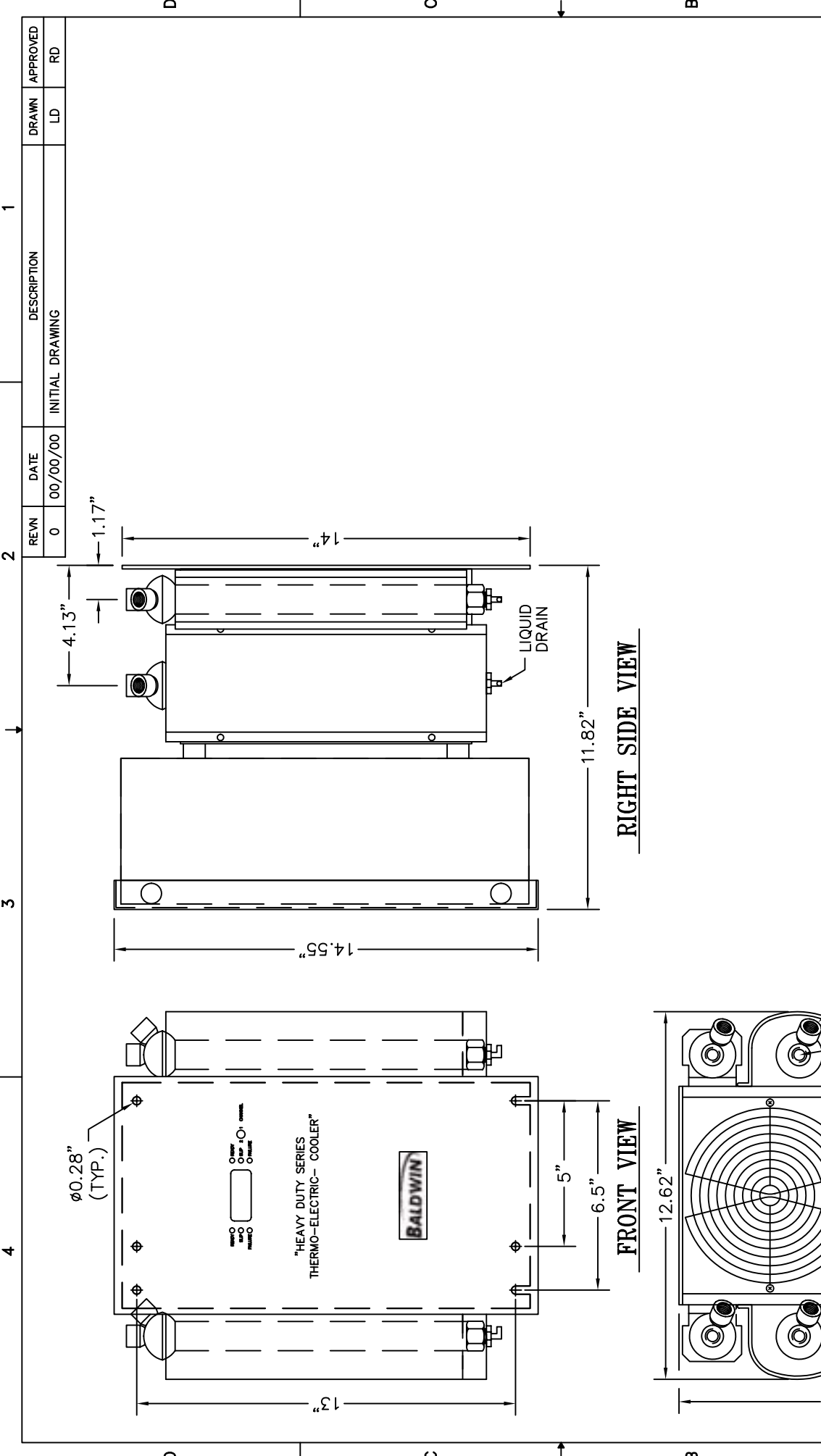
Sample Gas Flow Range	10-20 LPM (Series configuration) 21.2-42.4 SCFH
Average Inlet Dew Point at Rated Flow	175°F @ 43% H ₂ O, 10 LPM 61°C
Dimensions	14.50 x 12.5 x 12.00 in. HWD 36.8 x 31.75 x 30.5 cm
Weight	41 lbs 19.0 kg
Maximum Inlet Sample Temperature	400°F (205°C) SS, Glass, Durinert® 280°F (138°C) Kynar Impinger
Maximum Inlet Pressure	45 psig 3 bar / 2250 mmHg
Maximum Heat Exchanger Pressure Drop	<+1 in. H ₂ O
Ambient Temperature Range	33-104°F 0.56-40°C
Outlet Sample Gas Dew Point	41°F 5°C
Inlet Tubing Connection	3/8 in. FNPT (heat exchanger 1) 1/4 in. FNPT (heat exchangers 2,3,4)
Outlet Tubing Connection	1/4 in. FNPT
Drain Tubing Connection	3/8 in. FNPT
Voltage	110 (220 optional) VAC 50/60 Hz
Thermoelectric Elements	40 mm
Power Supply	500W
Cooling Down Time	Less than 3 minutes



ETA Associates

119 Foster Street, Bldg #6 • Peabody, MA 01960

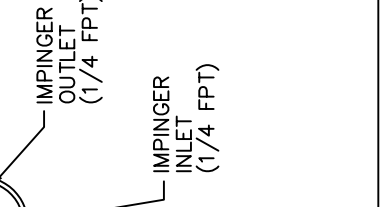
Tel: (978) 532-1330 • Fax: (978) 532 7325 • www.ETAassociates.com • eta@ETAassociates.com



REV#	DATE	DESCRIPTION	DRAWN	APPROVED
0	00/00/00	INITIAL DRAWING	LD	RD

ITEM	QTY	DESCRIPTION	MANUF.
USED FOR:			
MODEL NUMBER:			
DESCRIPTION:			
DRAWN BY:	LD	DATE	03/31/97
APPR:		DATE	
MATERIAL:			
FINISH:			
PART DESCRIPTION:	MODEL 20410 SAMPLE COOLER ARRANGEMENT DRAWING		
SIZE:	A	SCALE:	N T S
DRAWING/PART NO.:	MODEL 20410		
DESIGN DIMENSIONS ARE IN INCHES	CAD DIR: S:\S&M\DWGS\T.E. COOL-HEAVY SERIES		
() DENOTES MILLIMETER EQUIVALENTS WHEN USED	SHEET 1 OF 1		

UNLESS OTHERWISE SPECIFIED:
 TOLERANCE DECIMALS
 1 PLACE = ±.02
 2 PLACE = ±.02
 3 PLACE = ±.010
 ANGLES = ±5°
 HOLES = +.003/-001



PROPRIETARY INFORMATION
 THIS DOCUMENT CONTAINS INFORMATION PROPRIETARY TO BALDWIN, INC.
 AND IS TO BE USED SOLELY FOR THE PURPOSE FOR WHICH IT IS FURNISHED. THIS DOCUMENT SHALL NOT BE USED FOR ENGINEERING, DESIGN, PROCUREMENT, OR MANUFACTURING, IN WHOLE OR IN PART.
 BALDWIN, INC.