

DIRECT EXTRACTIVE FILTER PROBES

General Purpose Model 32C

Application

The Baldwin™-Series Model 32C Heated Filter Probe is designed to be mounted on a stack or duct for use in low particulate applications. Its primary function is to provide a heated environment to maintain sample gas temperatures above dewpoint and remove particulate material from the gas sample. Model 32C features an external regulated heater jacket, a standard 10 micron sintered stainless steel filter element, an integral calibration gas port on both sides of the filter element, and a NEMA 4 enclosure.



General Specifications

Probe	
Calibration	Integral calibration on both sides of filter element
Heater Jacket Temp Control	External regulated (standard)
Connections	1¼" male pipe nipple mount; ½" male pipe thread adapter
Tube Connectors	3/8" sample line, 1/4" calibration gas
Thermocouple	Type K
Heat-shrink Boot	7" length, 2.75" min expanded I.D. nose
O-rings	Viton®
Gaskets	Graphoil®
Dimensions	14 x 12 x 8 in. HWD (w/o Stinger probe) 36 x 30 x 20 cm HWD
Weight	30 lbs 14 kg

Operating Specifications

Calibration Gas Requirement	20 psig, 6-10 LPM
Probe Operating Temperature	375°F (190°C)
Input Voltage	110 standard (220 optional) VAC, 50/60 Hz

Material Specifications

Enclosure Material	NEMA 4 Steel (standard); NEMA 4X Stainless Steel (optional)
Heater Type	Silicone rubber blanket with metal snap closures
Enclosure Insulation Material	½" thick silicone, medium density
Filter Chamber Material	316 stainless steel
Filter Element Types	10 micron sintered SS (standard) 5, 20 micron sintered SS 2 micron ceramic 2 micron SS screen mesh

Baldwin™ is a Trademark of Perma Pure LLC

Viton® is a Registered Trademark of DuPont

Graphoil® is a Registered Trademark of Union Carbide Corporation



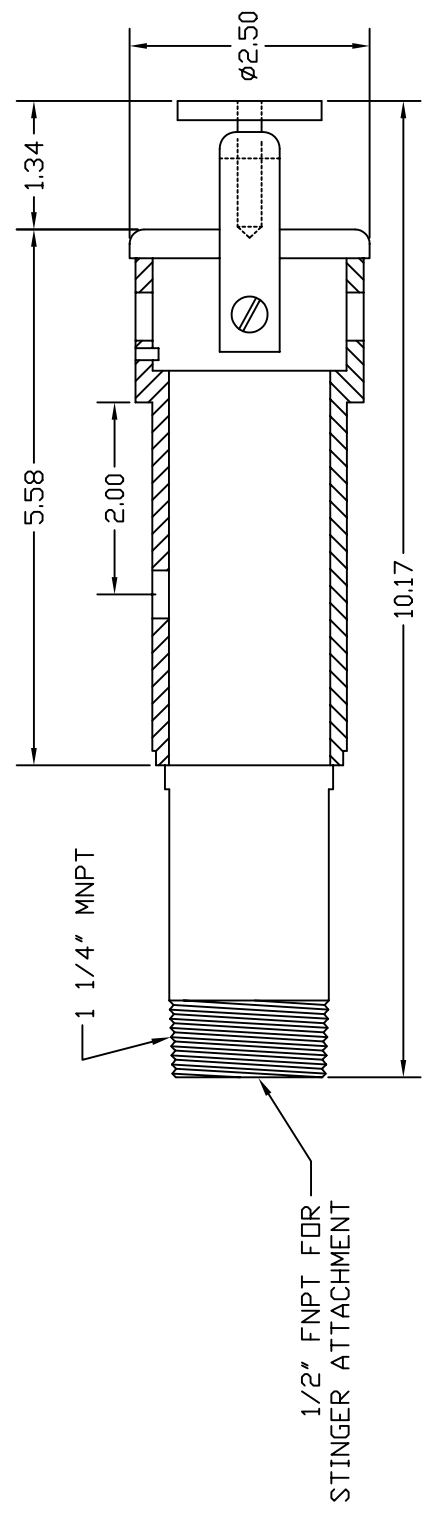
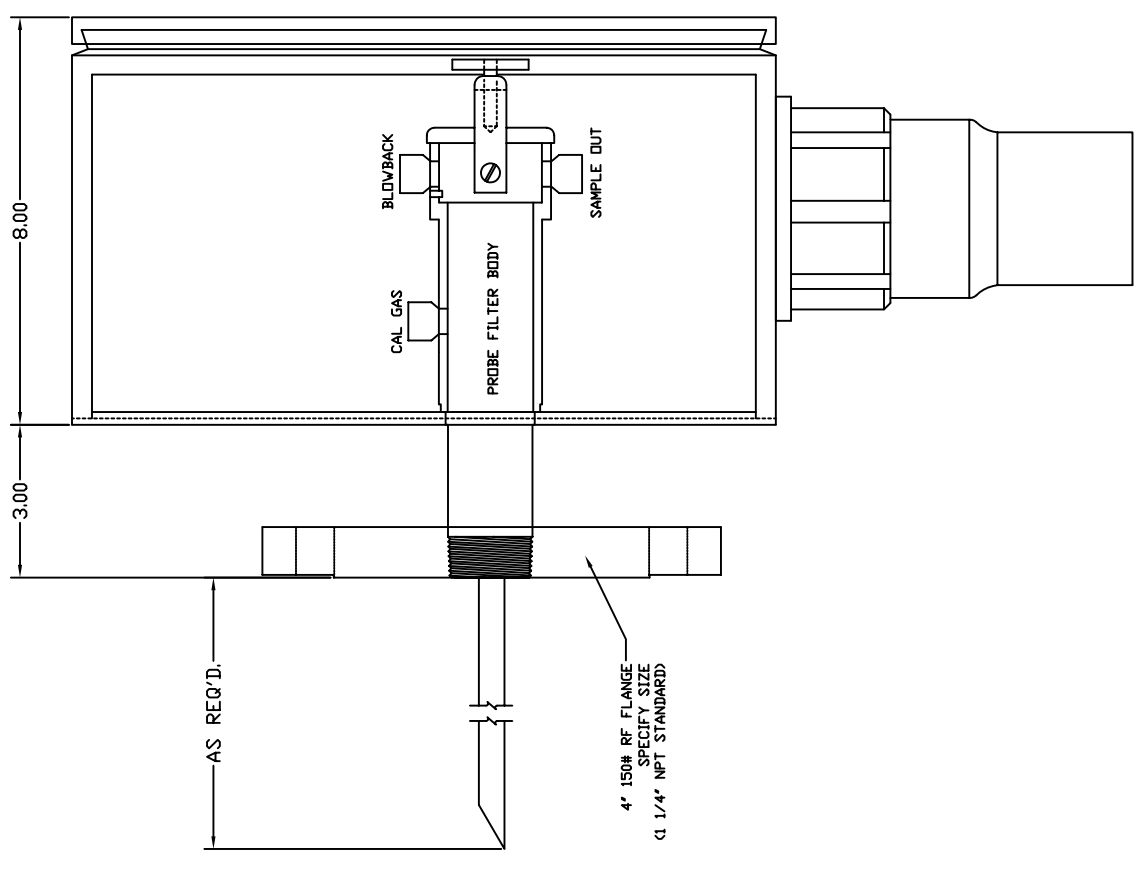
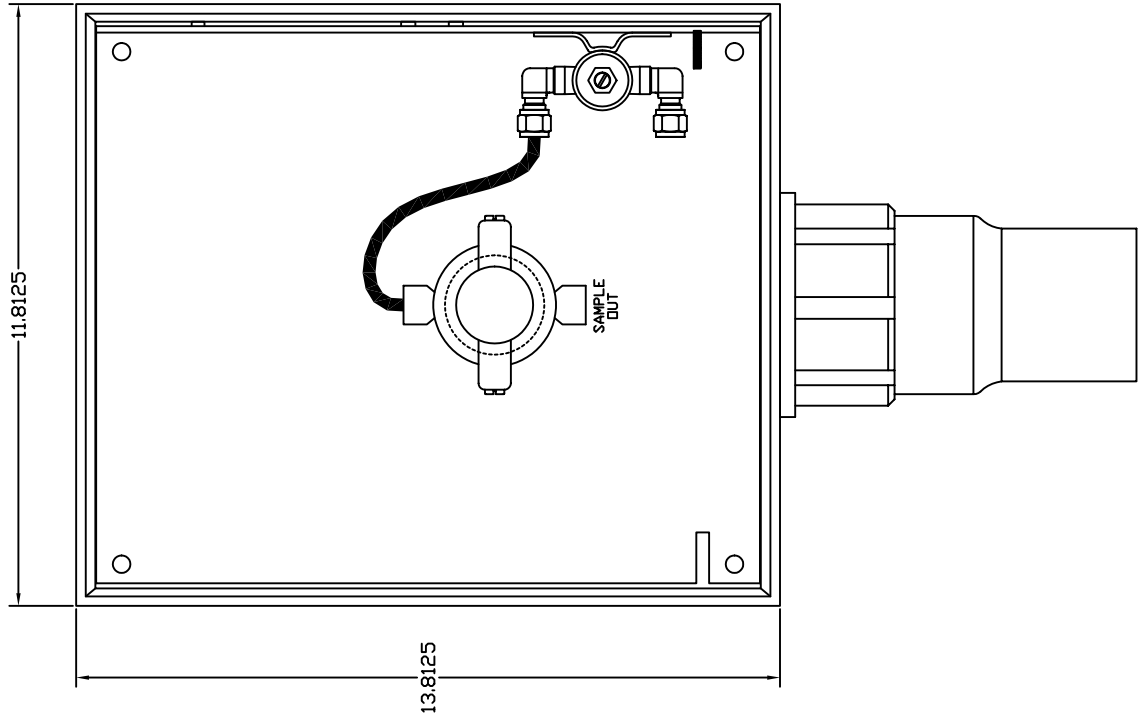
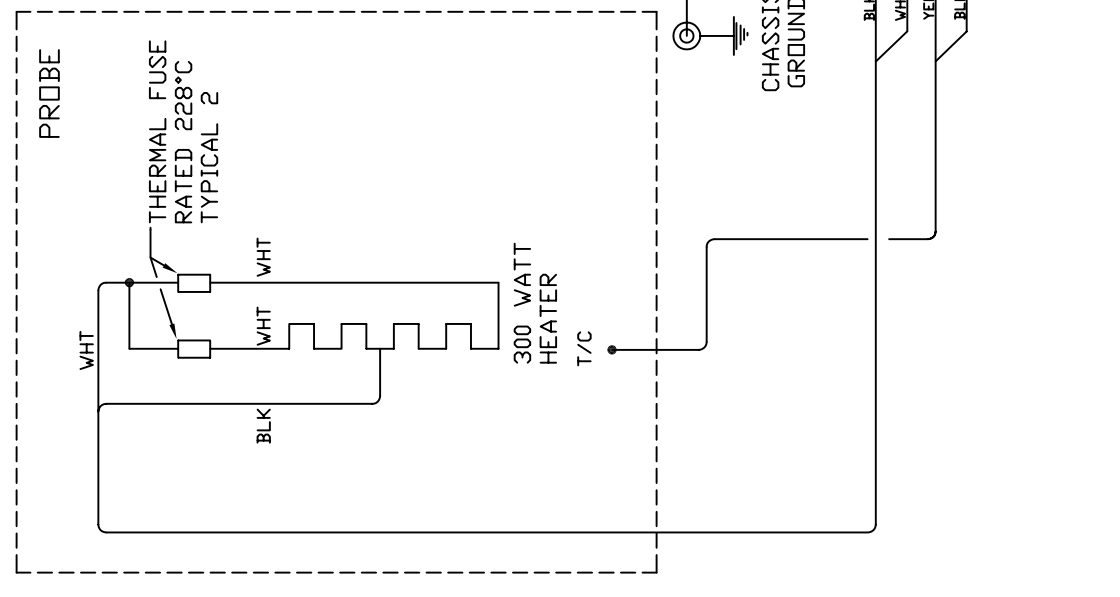
ETA Associates

119 Foster Street, Bldg #6 • Peabody, MA 01960

Tel: (978) 532-1330 • Fax: (978) 532 7325 • www.ETAassociates.com • eta@ETAAssociates.com

REV/N	DATE	DESCRIPTION	DRAWN	APPROVED
0	00/00/00	INITIAL DRAWING	JO	JO
A	03/01/04	CREATED TO TRUE SCALE. NEW TTB	RAW	RAW

ITEM QTY	DESCRIPTION	MANUF.
USED FOR:	MODEL NUMBER:	
DATE:	DATE:	
APP'D:	APP'D:	
MATERIAL:	PART DESCRIPTION:	
FINISH:	MODEL 32C SAMPLE PROBE ARRANGEMENT DRAWING	
DESIGN DIMENSIONS ARE IN INCHES	SIZE SCALE:	
() DENOTES MILLIMETER EQUIVALENTS WHEN USED	B NTS MODEL 32C	
	DRAWING/PART NO.	
	CAD DIR: S:\SMD\DWGS\HEATED FILTER PROBES	
	SHEET 1 OF 1	



1/2" FNPT FOR STINGER ATTACHMENT

1 1/4" MNPT

10.17

5.58

2.00

1.34

Ø2.50

11.8125

13.8125

8.00

3.00

AS REQ'D.

4" 150# RF FLANGE (1 1/4" NPT STANDARD)

PROBE FILTER BODY

CAL GAS

BLOWBACK

SAMPLE OUT

1 1/4" MNPT

10.17

5.58

2.00

1.34

Ø2.50

11.8125

13.8125

8.00

3.00

AS REQ'D.

4" 150# RF FLANGE (1 1/4" NPT STANDARD)

PROBE FILTER BODY

CAL GAS

BLOWBACK

SAMPLE OUT

1 1/4" MNPT

10.17

5.58

2.00

1.34

Ø2.50

11.8125

13.8125

8.00

3.00

AS REQ'D.

4" 150# RF FLANGE (1 1/4" NPT STANDARD)

PROBE FILTER BODY

CAL GAS

BLOWBACK

SAMPLE OUT

1 1/4" MNPT

10.17

5.58

2.00

1.34

Ø2.50

11.8125

13.8125

8.00

3.00

AS REQ'D.

4" 150# RF FLANGE (1 1/4" NPT STANDARD)

PROBE FILTER BODY

CAL GAS

BLOWBACK

SAMPLE OUT

1 1/4" MNPT

10.17

5.58

2.00

1.34

Ø2.50

11.8125

13.8125

8.00

3.00

AS REQ'D.

4" 150# RF FLANGE (1 1/4" NPT STANDARD)

PROBE FILTER BODY

CAL GAS

BLOWBACK

SAMPLE OUT

1 1/4" MNPT

10.17

5.58

2.00

1.34

Ø2.50

11.8125

13.8125

8.00

3.00

AS REQ'D.

4" 150# RF FLANGE (1 1/4" NPT STANDARD)

PROBE FILTER BODY

CAL GAS

BLOWBACK

SAMPLE OUT

1 1/4" MNPT

10.17

5.58

2.00

1.34

Ø2.50

11.8125

13.8125

8.00

3.00

AS REQ'D.

4" 150# RF FLANGE (1 1/4" NPT STANDARD)

PROBE FILTER BODY

CAL GAS

BLOWBACK

SAMPLE OUT

1 1/4" MNPT

10.17

5.58

2.00

1.34

Ø2.50

11.8125

13.8125

8.00

3.00

AS REQ'D.

4" 150# RF FLANGE (1 1/4" NPT STANDARD)

PROBE FILTER BODY

CAL GAS

BLOWBACK

SAMPLE OUT

1 1/4" MNPT

10.17

5.58

2.00

1.34

Ø2.50

11.8125

13.8125

8.00

3.00

AS REQ'D.

4" 150# RF FLANGE (1 1/4" NPT STANDARD)

PROBE FILTER BODY

CAL GAS

BLOWBACK

SAMPLE OUT

1 1/4" MNPT

10.17

5.58

2.00

1.34

Ø2.50

11.8125

13.8125

8.00

3.00

AS REQ'D.

4" 150# RF FLANGE (1 1/4" NPT STANDARD)

PROBE FILTER BODY

CAL GAS

BLOWBACK

SAMPLE OUT

1 1/4" MNPT

10.17

5.58

2.00

1.34

Ø2.50

11.8125

13.8125

8.00

3.00

AS REQ'D.

4" 150# RF FLANGE (1 1/4" NPT STANDARD)

PROBE FILTER BODY

CAL GAS

BLOWBACK

SAMPLE OUT

1 1/4" MNPT

10.17

5.58

2.00

1.34

Ø2.50

11.8125

13.8125

8.00

3.00

AS REQ'D.

4" 150# RF FLANGE (1 1/4" NPT STANDARD)

PROBE FILTER BODY

CAL GAS

BLOWBACK

SAMPLE OUT

1 1/4" MNPT

10.17

5.58

2.00

1.34

Ø2.50

11.8125

13.8125

8.00

3.00

AS REQ'D.

4" 150# RF FLANGE (1 1/4" NPT STANDARD)

PROBE FILTER BODY

CAL GAS

BLOWBACK

SAMPLE OUT

1 1/4" MNPT

10.17

5.58

2.00

1.34

Ø2.50

11.8125

13.8125

8.00

3.00

AS REQ'D.

4" 150# RF FLANGE (1 1/4" NPT STANDARD)

PROBE FILTER BODY

CAL GAS

BLOWBACK

SAMPLE OUT

1 1/4" MNPT

10.17

5.58

2.00

1.34

Ø2.50

11.8125

13.8125

8.00

3.00

AS REQ'D.

4" 150# RF FLANGE (1 1/4" NPT STANDARD)

PROBE FILTER BODY

CAL GAS

BLOWBACK

SAMPLE OUT

1 1/4" MNPT

10.17

5.58

2.00

1.34

Ø2.50

11.8125

13.8125

8.00

3.00

AS REQ'D.

4" 150# RF FLANGE (1 1/4" NPT STANDARD)

PROBE FILTER BODY

CAL GAS

BLOWBACK

SAMPLE OUT

1 1/4" MNPT

10.17

5.58

2.00

1.34

Ø2.50

11.8125

13.8125

8.00

3.00

AS REQ'D.